



ALSET<sup>®</sup> INC.

[WWW.ALSETINC.COM](http://WWW.ALSETINC.COM) | NASDAQ: **AEI**

3 Jan 2024

## **DISCLAIMER**

THIS PRESENTATION IS PROPRIETARY AND CONFIDENTIAL; IT MAY NOT BE REPRODUCED, IN WHOLE OR IN PART, AND MAY NOT BE DELIVERED TO ANY PERSON WITHOUT THE PRIOR CONSENT OF ALSET INCORPORATED. THIS DOCUMENT IS BEING PROVIDED TO YOU SOLELY FOR INFORMATIONAL PURPOSES. IT IS NOT INTENDED TO BE, NOR SHALL IT BE CONSTRUED AS, AN OFFER, OR SOLICITATION OF AN OFFER, TO BUY OR SELL AN INTEREST IN THE COMPANY. NOTHING IN THIS DOCUMENT CONSTITUTES ACCOUNTING, LEGAL, REGULATORY, TAX OR OTHER ADVICE. ANY DECISION TO SUBSCRIBE FOR INTERESTS IN THE COMPANY MUST BE MADE SOLELY ON THE BASIS OF INFORMATION CONTAINED IN SUBSCRIPTION AGREEMENT, WHICH INFORMATION MAY BE DIFFERENT FROM THE INFORMATION CONTAINED IN THIS DOCUMENT, INCLUDING ANY DATA, PROJECTIONS, AND UNDERLYING ASSUMPTIONS ALL OF WHICH ARE ACCORDINGLY SUBJECT TO CHANGE AT ANY TIME WITHOUT NOTICE. IN PREPARING THIS DOCUMENT, WE HAVE RELIED UPON AND ASSUMED, WITHOUT INDEPENDENT VERIFICATION, THE ACCURACY AND COMPLETENESS OF ALL INFORMATION AVAILABLE FROM PUBLIC SOURCES OR WHICH WAS OTHERWISE REVIEWED BY US. WHILE INFORMATION PROVIDED HEREIN IS BELIEVED TO BE RELIABLE, THE COMPANY MAKES NO REPRESENTATION OR WARRANTY WHETHER EXPRESS OR IMPLIED, AND ACCEPT NO RESPONSIBILITY FOR ITS COMPLETENESS OR ACCURACY OR RELIABILITY. PAST PERFORMANCE OF PROGRAMS ARE NOT NECESSARILY INDICATIVE OF FUTURE RESULTS.

# THE NEW ALSET



ALSET INC.  
NASDAQ: AEI



Listed on SGX: 40V



US Property Development



Real Estate Investment Trust



Listed on NYSE: DSS



ALSET INC.

## 9 DIVISIONS

**PROPERTY & LAND  
DEVELOPMENT**



**HAPI  
GROUP**



**NEW  
ENERGY**



**REAL ESTATE  
INVESTMENT TRUST**



**DIGITAL  
TRANSFORMATION**



**ELECTRIC  
VEHICLES**



**BANKING  
& FINANCE**



**RETAIL SUPPORT  
& DIGITALIZATION**

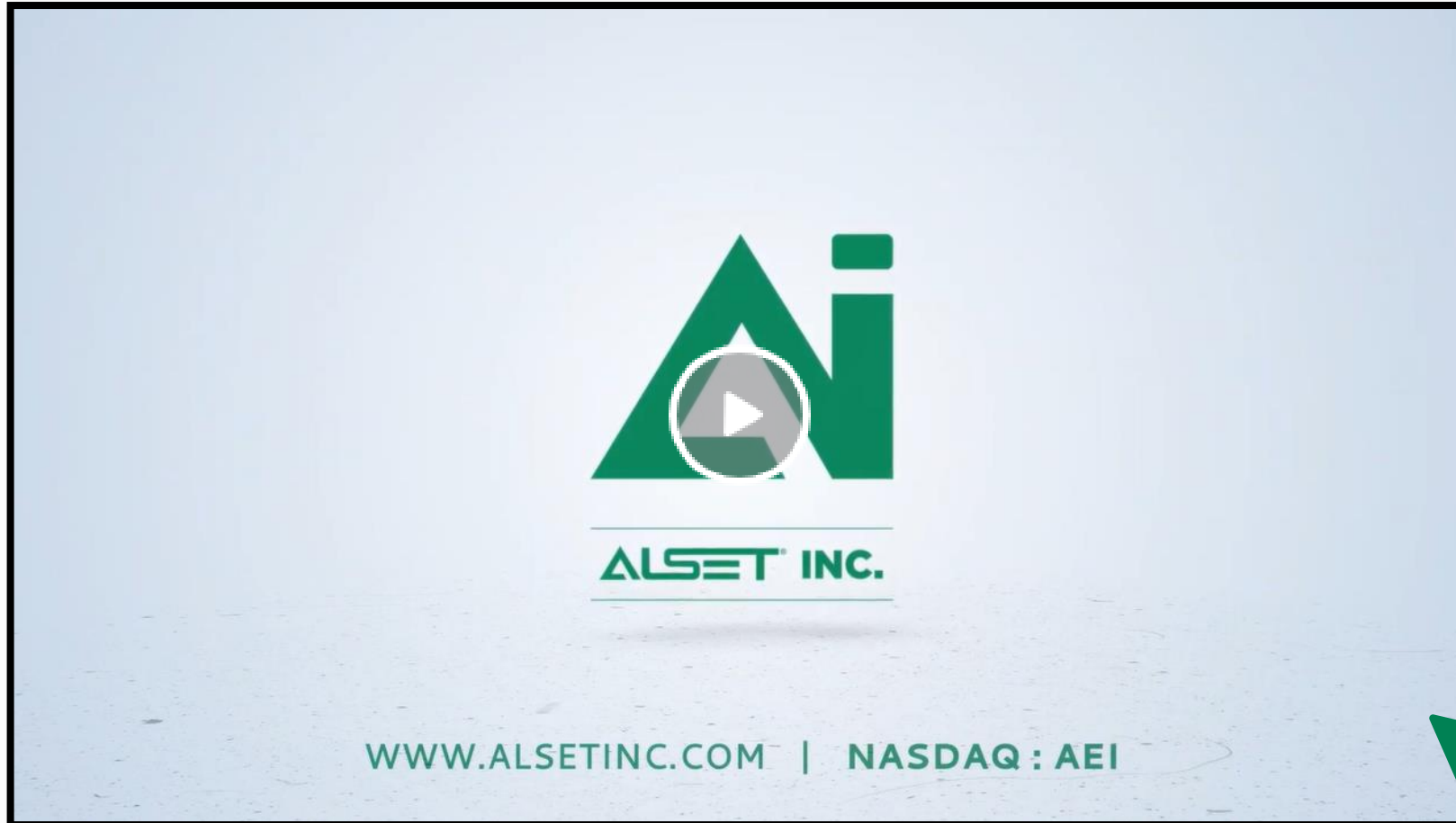


**DSS  
INC.**





Click on the video below to learn about  
**The New Alset**



# PROPERTY & LAND DEVELOPMENT DIVISION

---



[www.asethome.com](http://www.asethome.com)

CLICK BELOW BAR TO RETURN TO DIVISION MENU

# PROPERTY

Our Portfolio of Single-family Homes



**Northpark Woods**  
Porter, Texas



**Sorrento Bay**  
Lake Conroe, Willis



**Woodland Lakes**  
Huffman, Texas



**Sante Fe**  
Cleveland, Texas



## ALSET EHOME Community & Land Development



**Lakes at Black Oak**  
Houston, Texas



**Ballenger Run**  
Frederick County, Maryland



**Alset Villas**  
Magnolia, Texas

# ALSET EHOME CONCEPT



## EHOME FEATURES



SOLAR ENERGY SYSTEM



SMART HOME



HOME OFFICE



FILTERED WATER

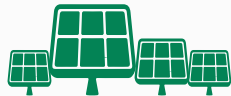


PURIFIED AIR



ELECTRIC VEHICLE

## COMMUNITY FEATURES



SOLAR FARM



VEHICLE-TO-GRID



MODULAR ORGANIC FARM

## UPCOMING FEATURES



ENERGY EFFICIENT  
HEPA FILTERED HVAC



TELEMED



ROBOTAXI



ALSET MEMBERSHIP

Visit Website:  
[Alset EHome Inc.](#)

Watch Video:  
[Alset EHome Concept](#)

Watch Video:  
[Tesla Installation](#)





## BUSINESS MODEL

**Alset EHome** focus on building a **Sustainable Healthy Living System** including a **REIT for long-term income**.

**1 BUILD FOR SALE**

Property Management Services included for Investors looking to earn rental yield.

**2 BUILD FOR RENT**



**3 TRANSFER TO**  
 **ALSET HOME REIT**  
**Target: 5% Yield**

Develop, Build, Purchase



Cash Payment



Sell to REIT

Generating Stable Dividend Yield for Investors

Watch Video:  
Alset Home REIT

# REAL ESTATE INVESTMENT TRUST DIVISION REIT

---



[www.alsethomereit.com](http://www.alsethomereit.com)

CLICK BELOW BAR TO RETURN TO DIVISION MENU



## LEVERAGING ON ALSET EHOME RENTAL UNITS

- Recurring income streams
- Quality control assurance
- Economies of scale (Cost-effective management)



Visit Website:  
[Alset Home REIT](#)

# BANKING & FINANCE DIVISION

DIGITAL BANKING AND FINANCE

---

AmericanPacific  
Bancorp

[www.ampacbankcorp.com](http://www.ampacbankcorp.com)

CLICK BELOW BAR TO RETURN TO DIVISION MENU



# American Pacific Bancorp



- Inventory Finance
- Product Production Finance
- Working Capital Finance
- Receivable Finance
- Manufacturing Equipment Finance

Visit Website:  
[American Pacific Bancorp](http://American Pacific Bancorp)

# HAPI GROUP DIVISION

## DIRECT SELLING COMPANIES



### FOOD & BEVERAGE



### TRAVEL



### WEALTH EDUCATION



### HEALTH & WELLNESS



# FOOD & BEVERAGE DIVISION



HAPI CAFE & HAPI MEAL

---



[www.hapicafes.com](http://www.hapicafes.com)



[www.ketomei.com](http://www.ketomei.com)



[www.fitfresh.sg](http://www.fitfresh.sg)



[www.killiney9pr.com](http://www.killiney9pr.com)

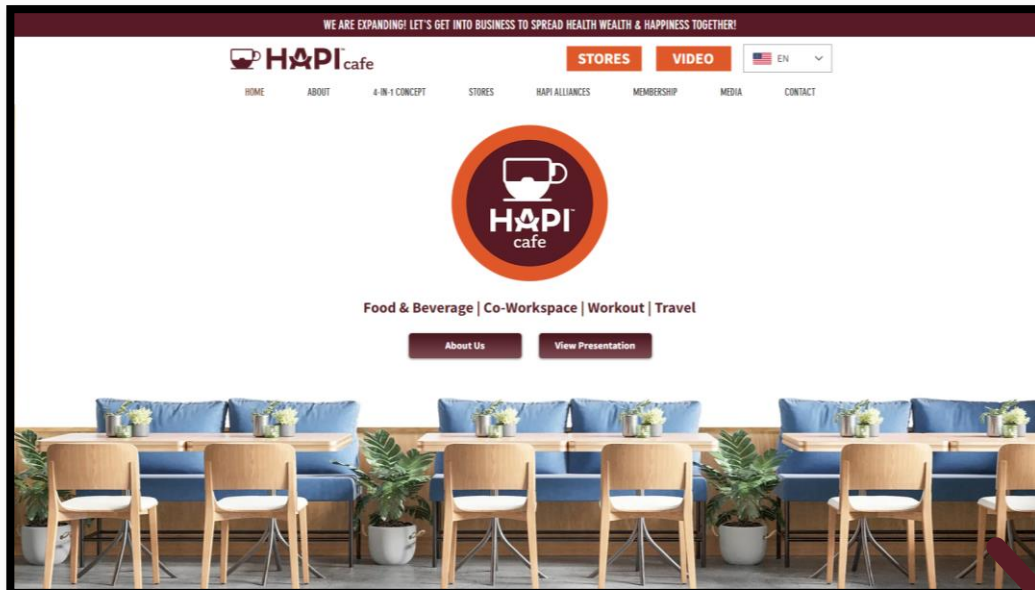
CLICK BELOW BAR TO RETURN TO DIVISION MENU



## 4-IN-1 CONCEPT CAFE

Café with Co-workspace, VR/AR Room & Hapi Travel

### WEBSITE



### CONCEPT VIDEO

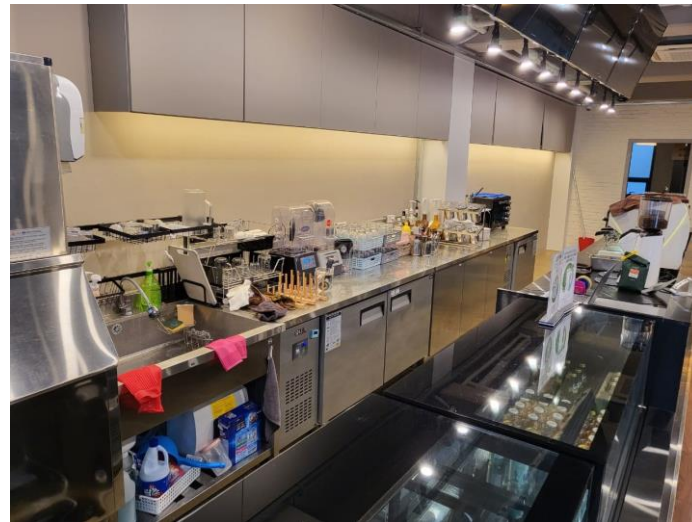






Watch Singapore Video:  
HAPI Café Singapore







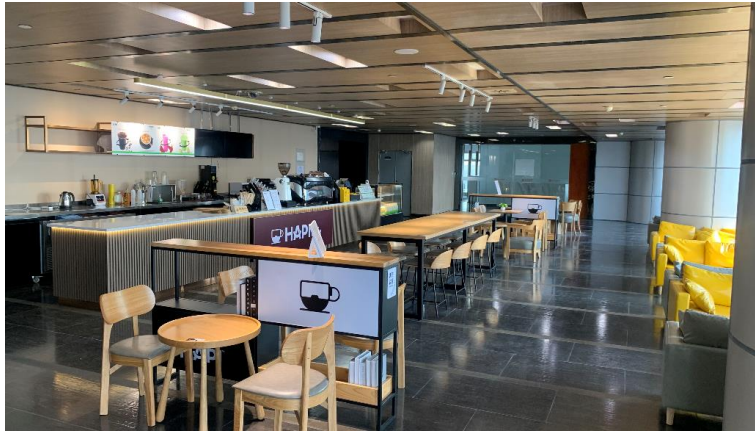






38th Floor, Dongguan Global Economic & Trade Building, 11 Dongguan Avenue,  
Nancheng, Dongguan, Guangdong Province, China

**China**



HAPI Cafe at 38<sup>th</sup> Floor



Tallest Building in Dongguan - 68 Floors  
Global Economic and Trade Building

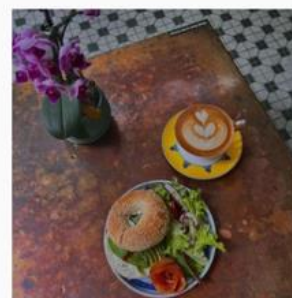
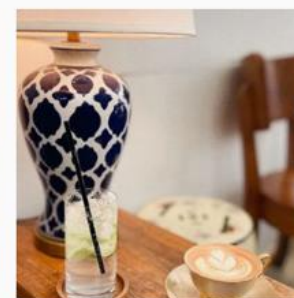






## HAPI Cafe Alliances

The Hapi Alliance embodies the idea of Hapi Cafe extending its influence by providing comprehensive support, a diverse array of product and service offerings, expert knowledge sharing, and access to a membership base. This initiative is aimed at assisting cafes that seek to retain their current brand identity while broadening their offerings and elevating their cafe business model.





**A HEALTHY MEAL = HEALTHY EXPERIENCE FOR MIND AND BODY**



### **KETO SUBSCRIPTION MEAL**

Partnering with Ketomei to serve Keto-diet meals in Hapi Cafe. Members are also able to sign up for Ketomei subscription meal plan

Visit Website:  
**KetoMei**



### **HEALTHY SUBSCRIPTION MEAL**

Healthier meals that reduce preparation hassle. Order Fit Fresh subscription meal plan and enjoy freshly made meal.

Visit Website:  
**Fit Fresh**



### **SINGAPORE COFFEESHOP**

We have 2 Killiney franchised stalls at 9 Penang Road and 2 Tanjong Katong Road (PLQ3) Singapore. A renowned local brand since 1919.

Visit Website:  
**Killiney**





Cook



Chill



Pack & Seal



Deliver



Heat



Enjoy



**ketomei**

Keto Subscription Meal Plan



Central Kitchen for Subscription Meal Plan

**FIT FRESH**

Nutritious Subscription Meal Plan



Visit Website:  
**KetoMei**

Visit Website:  
**Fit Fresh**





**Killiney** is one of Singapore's oldest franchises. **Founded in late 1919**, in an antiquated yet humble shop, Killiney has now an extensive menu offering a wide variety of local delicacies with 60 over stores globally.

### EXPANSION

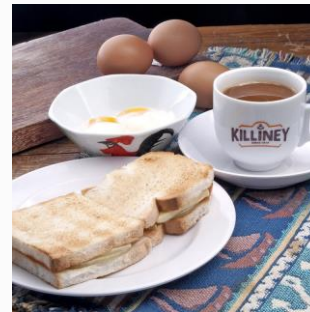
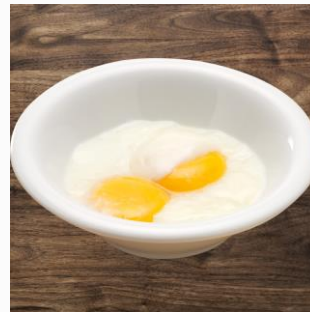
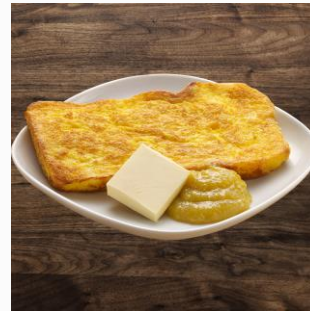
Leveraging on Alset Group's global footprint, Alset is in talks with Killiney to work on a strategic partnership basis to expand Killiney franchise into **Korea, Hong Kong, Macau, US** and **China**.



Visit Website:  
[Killiney](#)



Killiney Signature | Local Delights | Traditional Toast | All-Time-Favourite | Freshly brewed Coffee / Tea





# 2 Killiney Outlets



9 Penang Road #01-13, Singapore 238459



Visit Website:  
Killiney



# 2 Killiney Outlets



2 Tanjong Katong Road, PLQ3, #01-10, Singapore 437161







# TRAVEL

## SUBSCRIPTION-BASED GLOBAL TRAVEL MEMBERSHIP SERVICE

---



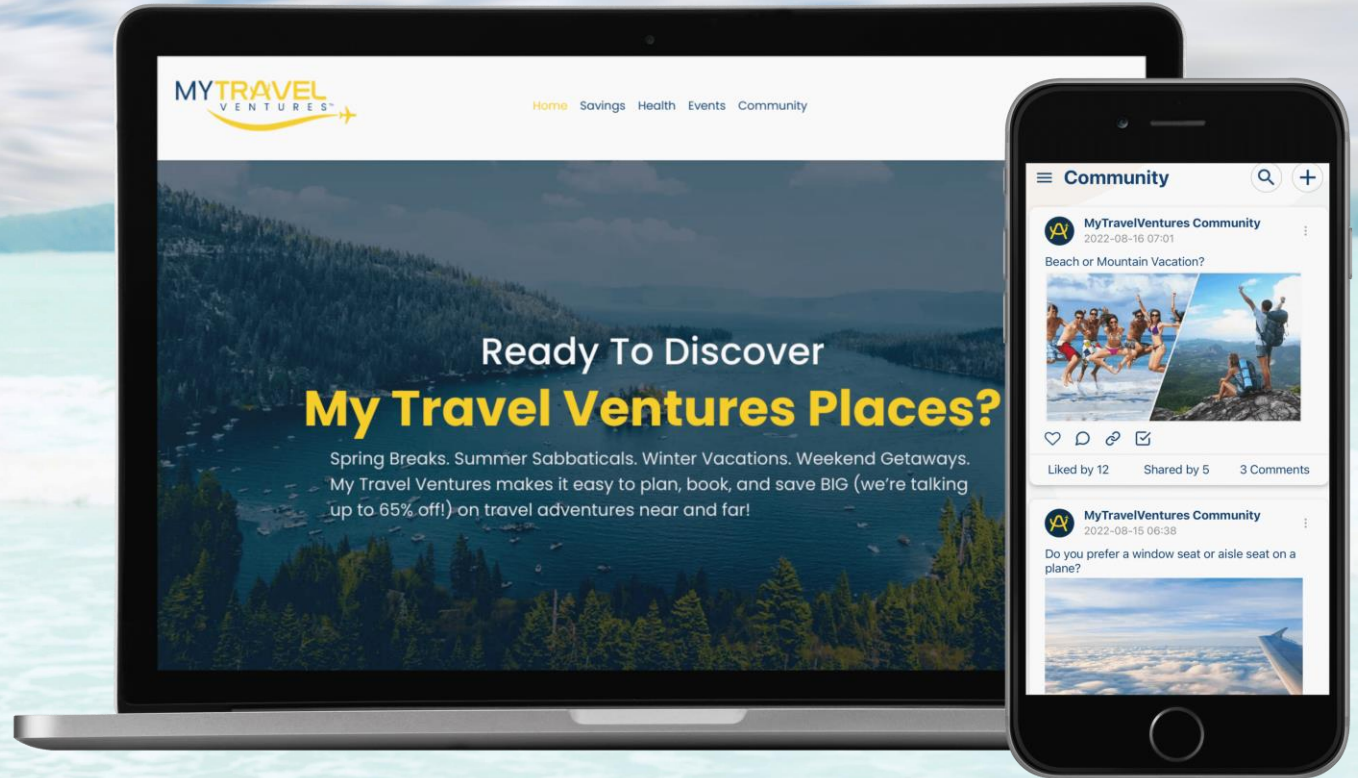
[www.mytravelventures.com](http://www.mytravelventures.com)

CLICK BELOW BAR TO RETURN TO DIVISION MENU

# TRAVEL SERVICE



Members can **Travel with Discounts** on hotels, resorts, cruises, and condos, plus extra savings on car rentals, activities, flights, and shopping.



## HOTEL

HOTELS at Unpublished Rates at over 800,000 Hotels up to 65% off.



## CRUISE

CRUISE HAPI Travel Members get cruise discounts up to 35% Off THE BEST ONLINE PRICES.



## CAR RENTAL

CAR RENTALS Save up to 25% off To Best prices at the time of booking!  
Car Rentals!



## AIRFARE



## CONDO WEEKS

CONDO WEEKS HAPI Travel Members have access to unlimited resort vacation getaways as low as \$199 for 8-Days / 7-Nights

Visit Website:  
[My Travel Ventures](#)



# WEALTH EDUCATION DIVISION

## MICRO WEALTH MANAGEMENT

---



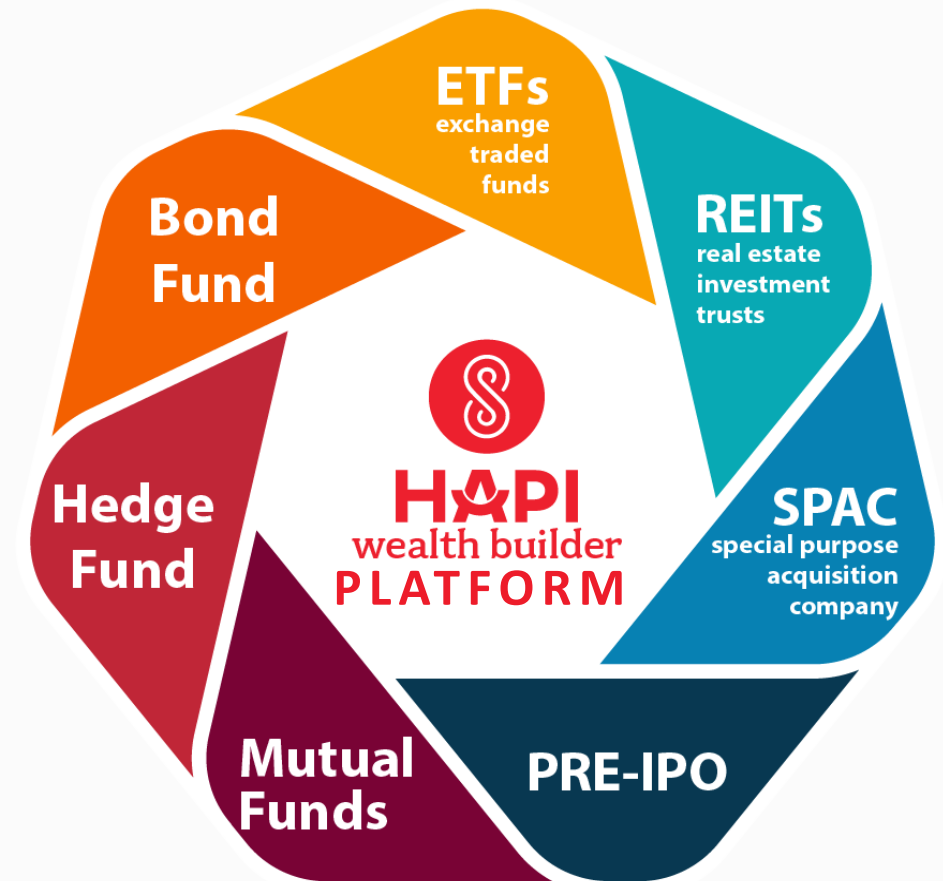
[www.hapiwealthbuilder.com](http://www.hapiwealthbuilder.com)

CLICK BELOW BAR TO RETURN TO DIVISION MENU  
CLICK BELOW BAR TO RETURN TO DIVISION MENU



This platform provides educational programs to members on various investment or wealth building topics and alternative investment opportunities. Additionally, the platform also provides institutional research and trade notifications.

Our objective is to provide mentoring and empowerment to individuals, equipping them with the necessary resources to attain financial independence. We aspire to aid individuals in their pursuit of Health, Wealth, and Happiness.



Visit Website:  
**HAPI Wealth Builder**

# HEALTH & WELLNESS

DIRECT SELLING

---



[www.hapi-marketplace.com](http://www.hapi-marketplace.com)



CLICK BELOW BAR TO RETURN TO DIVISION MENU



# HAPI Products

## INVESTING IN PRODUCT INNOVATION

We spend millions and years developing and acquiring innovative products **for our members.**



HAPI Functional Drink



HAPI Functional Supplement



HAPI Functional Food



HAPI Skincare



HAPI Wellness



HAPI Home Improvement



Click on each category to view more details.

# HAPI Services

## REVOLUTIONARY SERVICES

HAPI Marketplace provide our members with exclusive access to services that are **unlike any direct selling company you've ever seen.**



**HAPI Finance**



**HAPI Home**



**HAPI Wealth Builder**



**HAPI Meal**



**HAPI Travel**

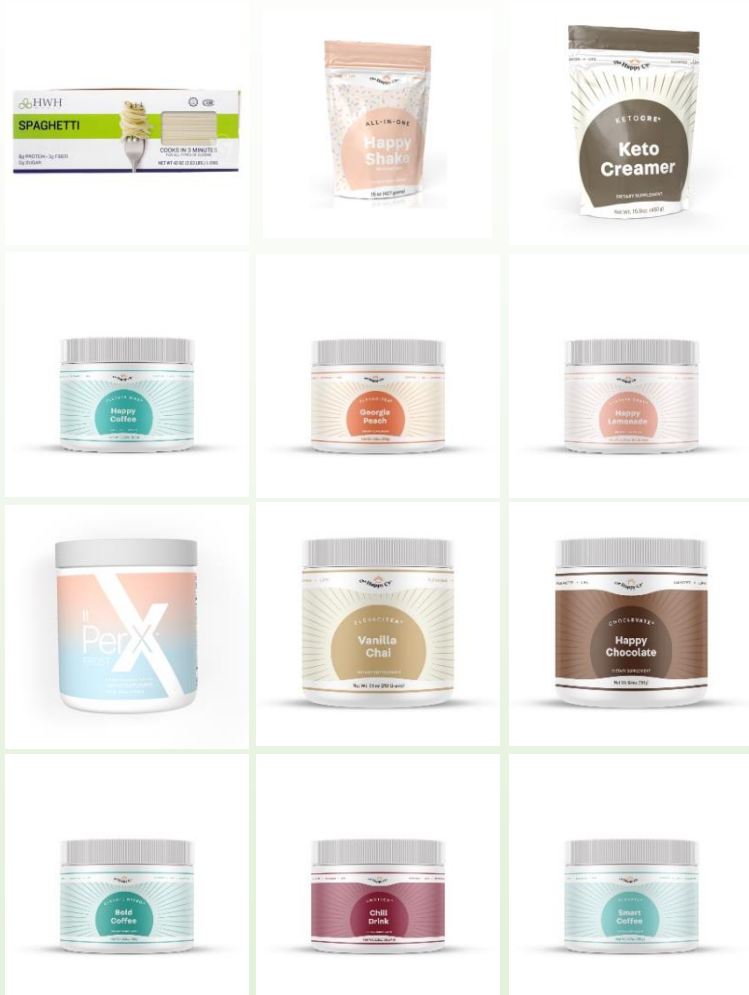


**HAPI Insurance**



Click on each category to view more details.

*Food and Beverages*



*Cosmetics / Wellness*



*Health Supplements*



# GLOBAL COMMUNICATION

COMMUNICATION NETWORK

---

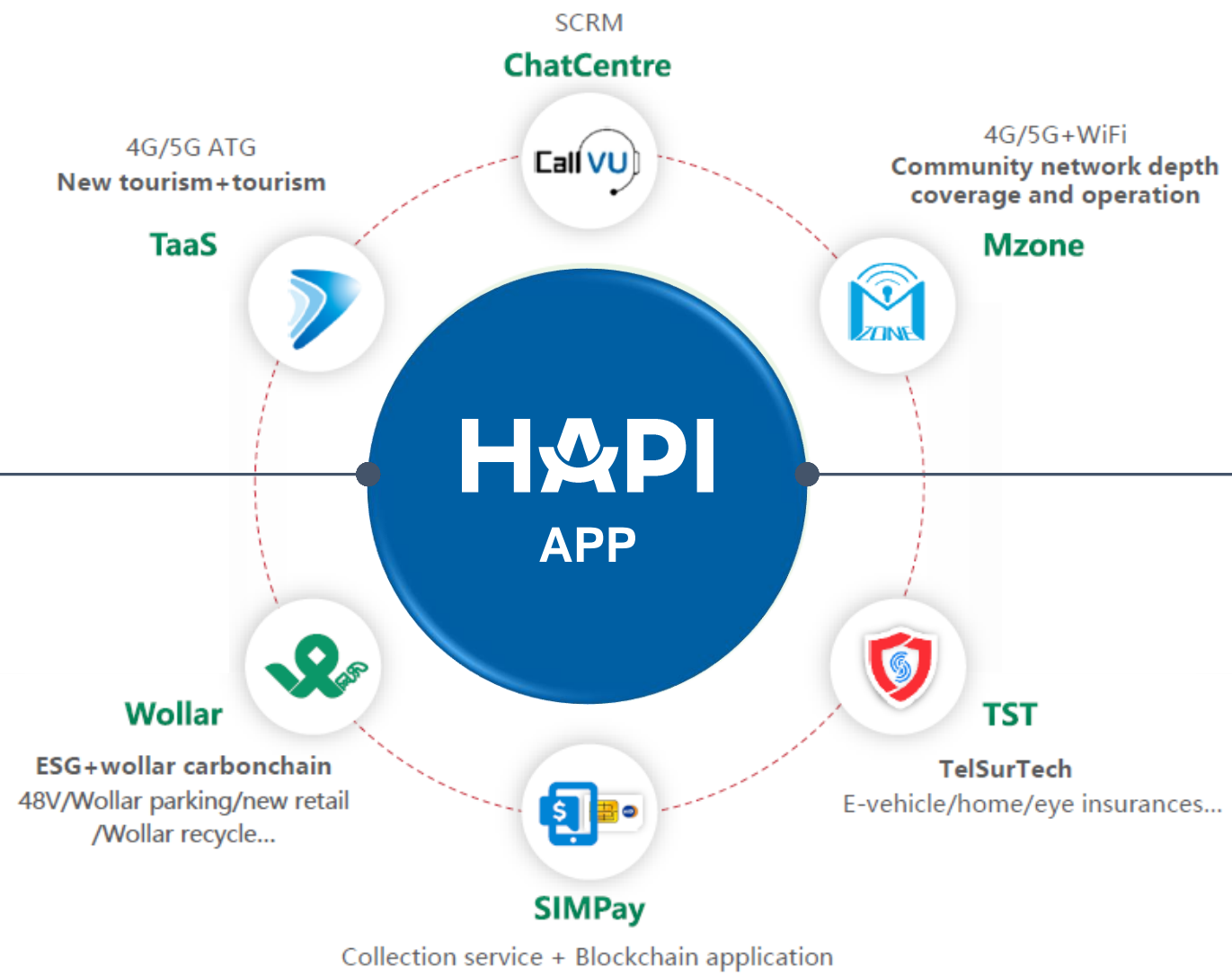
**HAPI**  
**APP**



CLICK BELOW BAR TO RETURN TO DIVISION MENU



- United States
- England
- France
- Italy
- Germany
- Ireland
- Philippines
- Indonesia
- Vietnam
- Malaysia
- More Telecom Operations ...



- Airport WiFi
- Cabin WiFi
- Hotel WiFi
- Public transport WiFi
- Taxi WiFi
- Merchant WiFi ...



# DIGITAL TRANSFORMATION DIVISION

INFORMATION TECHNOLOGY

---



[www.hapimetaverse.com](http://www.hapimetaverse.com)

CLICK BELOW BAR TO RETURN TO DIVISION MENU



## TECHNOLOGY OFFERING

We offer innovative technology solutions to help you stay ahead of the competition, streamline your operations, and enhance your customer engagement. Our team of experts has the knowledge and expertise to deliver the cutting-edge solutions you need. Let us take your business to the next level with our Technology Solutions.



**Metaverse Services**



**CRM White Label App**



**AI Services Chatbot and ITSM**



**Blockchain Service**



**AR/XR Technologies**



**Hardware and IT Services**

Watch Video:  
[HAPI Metaverse](#)

Visit Website:  
[HAPI Metaverse](#)

CRM  
White Label App







**HAPI**  
metaverse



Incubate and invest in metaverse related projects and work with **Hapi Cafe**, to set aside space for patrons of its cafes to enter existing **Virtual Reality** rooms or games





# RETAIL SUPPORT & DIGITALIZATION DIVISION

INFORMATION TECHNOLOGY

---



[www.vei-i.com](http://www.vei-i.com)

CLICK BELOW BAR TO RETURN TO DIVISION MENU



# VEI

号通联盟

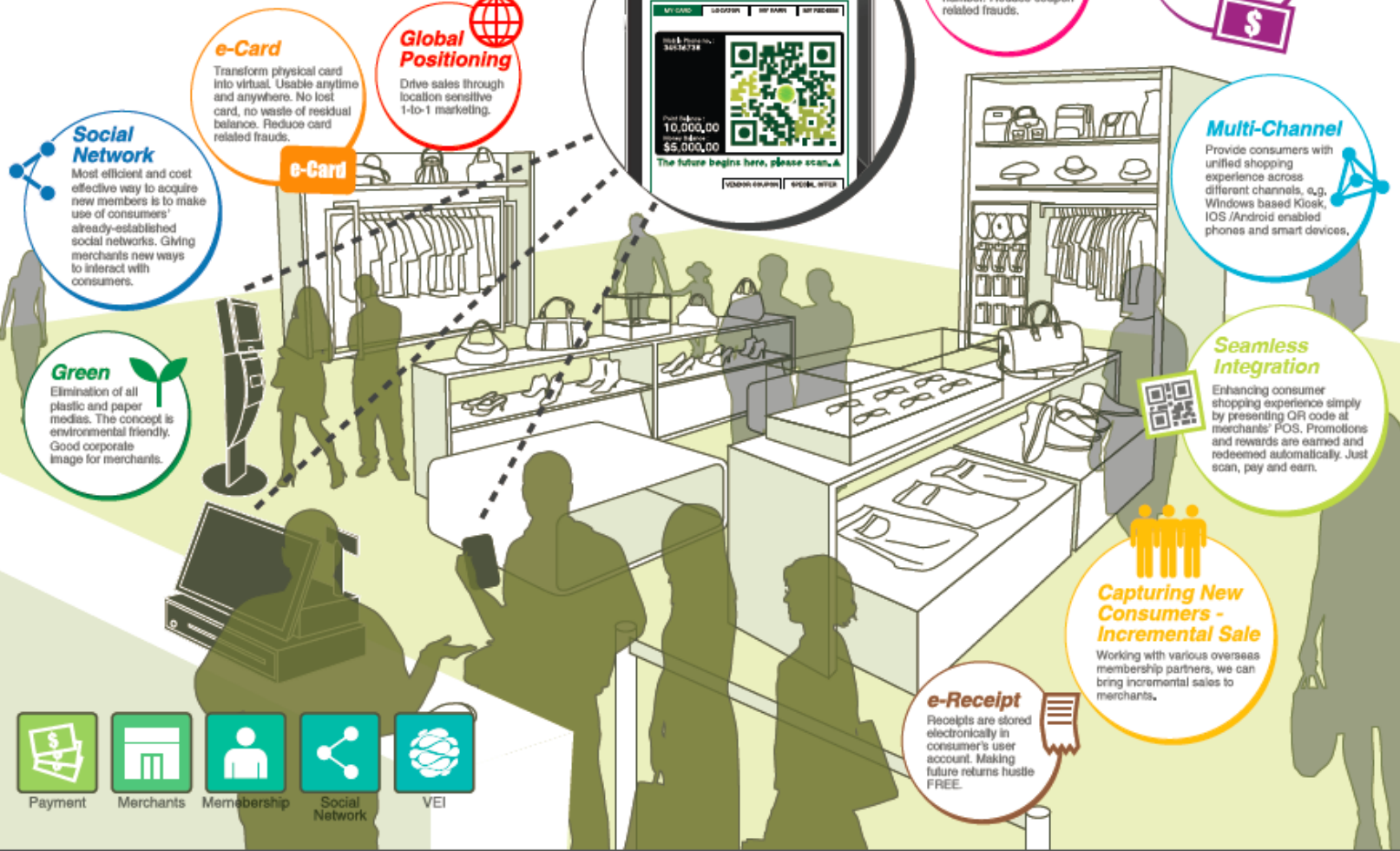
## GLOBAL PAYMENT SYSTEM



### Mobile Stored Value Card Solution

#### Scan, Pay and Earn

Mobile Stored Value Card is a technology platform where consumers and merchants meet. It links up merchants' all types of stored value medias such as gift certificate, loyalty card, cash coupon, gift voucher, etc. with a unique but commonly used identifier - phone number.



**Social Network**  
Most efficient and cost effective way to acquire new members is to make use of consumers' already-established social networks. Giving merchants new ways to interact with consumers.

**e-Card**  
Transform physical card into virtual. Usable anytime and anywhere. No lost card, no waste of residual balance. Reduce card related frauds.

**Global Positioning**  
Drive sales through location sensitive 1-to-1 marketing.

**e-Coupon**  
Unlock idle spending power in stored medias, coupons are linked to consumers' phone number. Reduce coupon related frauds.

**e-Payment**  
Encourage impulse buying through online credit and debit card payments. It is that simple.

**Multi-Channel**  
Provide consumers with unified shopping experience across different channels, e.g. Windows based Kiosk, IOS /Android enabled phones and smart devices.

**Green**  
Elimination of all plastic and paper medias. The concept is environmental friendly. Good corporate image for merchants.

**Seamless Integration**  
Enhancing consumer shopping experience simply by presenting QR code at merchants' POS. Promotions and rewards are earned and redeemed automatically. Just scan, pay and earn.

**Capturing New Consumers - Incremental Sale**  
Working with various overseas membership partners, we can bring incremental sales to merchants.

**e-Receipt**  
Receipts are stored electronically in consumer's user account. Making future returns hassle FREE.

- Payment
- Merchants
- Membership
- Social Network
- VEI

Visit Website:  
[Value Exchange International](http://Value Exchange International)





**VEII**  
号通联盟

[www.vei-i.com](http://www.vei-i.com)



Retail Payment Solutions



24/7 Global Service Desk



Self Checkout



Retail Inspection Robot



Electronic Shelf Label



Augmented Reality Mobile Apps



# CORPORATE CLIENTS



# NEW ENERGY DIVISION

CLEAN ENERGY STORAGE

---

***NEW ENERGY***  
ASIA PACIFIC

CLICK BELOW BAR TO RETURN TO DIVISION MENU



**Manufacturing Facility**  
(China Based)

## Standalone Chargers



### FLEXIBILITY

Free combination of 4 standards serving all electric vehicles

- GB/T connectors for Chinese cars
- CCS connectors for American and EU cars
- CHAdeMO connectors for Japanese cars
- AC Plug for early EV and hybrid cars

### SAFETY

Independently certified and 3rd party tested according to relevant electrical safety standards

### RELIABILITY

Multiple power modules ensures continued operation in the event of single component failure

### INNOVATIVE

Always ready for the next generation of EVs, including trucks, vans and other special vehicles, with up to 1000V higher voltage output0

## Energy Storage



Used for large-scale grid-side energy storage projects. Standard battery modules, PCS modules, BMS, EMS, and other systems form standard containers.

### • Benefits:

- Reduces customization time and construction cost.
- Minimizes safety hazards and management risks from local installation differences.

### • Meets application needs of regional power grid:

- Peak shaving
- Frequency regulation
- Voltage regulation
- Emergency response
- New energy consumption



### • Standardized 10-foot container system configurations:

- 645KWh/300KW
- 430KWH/200KW energy storage system.





HONOR X20  
64MP TRIPLE CAMERA



HONOR X20  
64MP TRIPLE CAMERA



## ENERGY STORAGE CONTAINERS

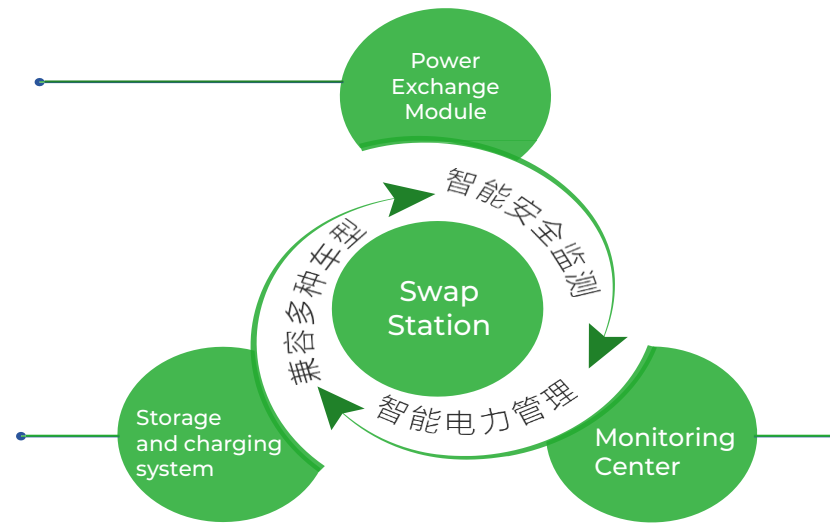
Standard battery modules, PCS modules, BMS, EMS and other systems are used to form standard containers to build large-scale grid-side energy storage projects. The standardized 10-foot container system can be configured with 645KWh/300KW or 430KWH/200KW energy storage system. The standardized and prefabricated design reduces the user's customization time and construction cost, and reduces the safety hazards and management risks caused by local installation differences. Meet the application needs of regional power grid such as peak shaving, frequency regulation, voltage regulation, emergency response, and new energy consumption, and ensure the normal operation of the power system.



## Heavy Truck Battery Swap Station

Adopts the first lateral power exchange technology in China, which has the characteristics of small footprint, fast station construction, flexible battery compartment configuration, etc., and at the same time improves the fault tolerance of vehicle entry and parking through the precise positioning of high-precision sensors, friendly power exchange experience, and higher power exchange efficiency.

- **High-precision**  
sensors for precise positioning
- **Automatic**  
Quick release and quick change
- **Intelligent**  
Battery selection
- **24 Hourly Monitoring**  
Reduce risk
- **Smart Charging**  
Improve battery health
- **Constant Environment**  
Extend battery life



- **Integrated control center**
  - Fire protection system
  - Monitoring system
  - Data server
  - Power exchange control platform
- **Intelligent processing center**
  - Smart settlement of transactions
  - Intelligent data processing

**Core Technology**

**Unique technical features**

**2 Power Exchange Platforms And  
2 Power Exchange Systems  
1 Power Exchange Equipment**

**Critical Parameters / Single Station**

**KEY  
PARAMETER**

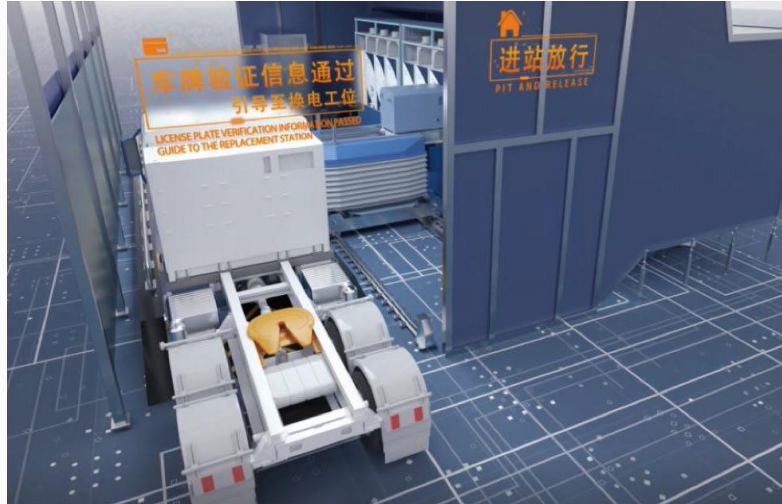
Trips	<b>288</b> Times	Time	<b>5</b> Minutes	Charge	<b>3/7/11</b> Times
Power Supply Demand	<b>2500</b> k v a	Occupation Area	<b>300</b> m <sup>2</sup>	Serve Vehicle	<b>→60</b> Vehicle



1

## Drive into the substation

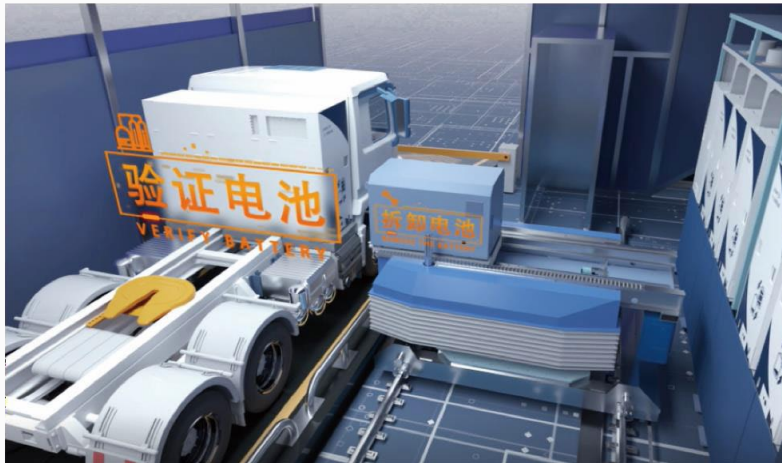
The driver looks for the nearest station online through the APP and navigates there. The barrier system verifies the license plate and identifies the account information through the camera, and after confirmation, the vehicle drives into the electrical exchange station.



2

## Battery verification

Through Bluetooth communication, the station-end platform obtains vehicle battery information such as vehicle ODO mileage and cumulative discharge power, and verifies that the battery health status meets the requirements, and then starts the battery replacement operation.



3

## Battery replacement

Automatically unlock the car base to accurately position the battery, automatically remove the empty battery, and fill the battery.



4

## Drive out of the swap station

The driver can complete the power exchange after waiting for about 5 minutes, and complete the order payment operation through the APP, and can drive out of the exchange station directly without settling on the spot.

# ELECTRIC VEHICLES DIVISION

ALL-ELECTRIC TRANSPORTATION

---

***NEW ENERGY***  
ASIA PACIFIC

CLICK BELOW BAR TO RETURN TO DIVISION MENU

## YOUR ADVANTAGES AT A GLANCE

# Go Electric!

Transitioning to all-electric equipment benefits construction companies and the environment in more ways than one.

The top three advantages of electric heavy machinery include:



### 3 MAJOR BENEFITS

#### LOWER CARBON EMISSIONS

Because electric construction equipment doesn't rely on gasoline or diesel fuel, it delivers net-zero carbon emissions and promotes sustainable construction practices.

#### LESS NOISE POLLUTION

Electric construction equipment is much quieter than traditional diesel-fueled machines. This makes machines safer to operate and leaves construction workers feeling less fatigued at the end of the day.

#### LESS PROJECT COST

All-electric equipment not only eliminates fuel costs but also reduces overall operating costs thanks to its lower engine run time.



# eTech Construction EV



## Excavator



### NE80

**Operating Weight** 8500 KG  
**Bucket Capacity** 0.1~0.28 m<sup>3</sup>  
**Rated Power** 46.5 kW



### NE120

**Operating Weight** 11,500 KG  
**Bucket Capacity** 0.2~0.45 m<sup>3</sup>  
**Rated Power** 73 kW



### NE150

**Operating Weight** 13,900 KG  
**Bucket Capacity** 0.5~0.7 m<sup>3</sup>  
**Rated Power** 92 kW



### NE250

**Operating Weight** 25,500 KG  
**Bucket Capacity** 1.2 m<sup>3</sup>  
**Rated Power** 126.5 kW



### NE360

**Operating Weight** 35,000 KG  
**Bucket Capacity** 1.6 m<sup>3</sup>  
**Rated Power** 188 kW



### NE530

**Operating Weight** 53,000 KG  
**Bucket Capacity** 2.7 m<sup>3</sup>  
**Rated Power** 300 kW

## Wheel Loader



### NE18-EL

**Rate Loaded** 1800 KG  
**Bucket Capacity** 1 m<sup>3</sup>



### NE50-EL

**Rate Loaded** 5000 KG  
**Bucket Capacity** 3 m<sup>3</sup>

# Dealership



LOXA



BROCK



AUV



YUEHU



REMOTE



METHANOL



eQ1PRO



ARRIZO e



eQ3



EA-01



X3 Pro



# Service & Training Centre

**Inspection**

**Maintenance**

**Repair**

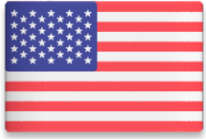
**Diagnostics**



We are launching a Service and Training Centre dedicated to electric vehicles (EVs). Our aim is to empower mechanics with specialized skills to service and repair EVs, aligning with the global shift towards electric mobility. Our center is not only a hub for top-tier EV maintenance but also a forefront institution for EV-focused vocational training.



# Global Distribution



New Energy Asia Pacific had established joint venture which will extend the company's market reach to the entire territory in **North America, United Arab Emirates, Australia, South Korea, Singapore, Malaysia and Indonesia.**

The strategic alliance will enhance our knowledge of industry insights, and the ability to serve a wide array of customers, ranging from commercial and industrial sectors to government agencies and infrastructure projects.



# NEW ENERGY

ASIA PACIFIC INC.

## 5 DIVISIONS



### DIVISION 1

#### In-House Product Construction EV

- All-Electric Excavator
- All-Electric Wheel Loader

### DIVISION 2

#### In-House Product EV Charging Station

- Charging Station Series
- BESS Energy Storage System
- Swap Station Series

### DIVISION 3 Electric Vehicle Dealership



### DIVISION 4 Training Centre New Energy Service & Training (NEST)

- Certified Training program for Engineers and Technician
- After Sales Service
- Call Centers

### DIVISION 5 Global Distribution

- A Joint Venture partnership was established to distribute our brand of Construction EV, EV Charging Station and other major brands that we have distribution rights to in these territories.



# DSS INC.

DIVISION

---



[www.dssworld.com](http://www.dssworld.com)

CLICK BELOW BAR TO RETURN TO DIVISION MENU



Learn more about



**DSS Inc. (NYSE:DSS)**

Watch DSS Video



View DSS Presentation Deck



Visit Website:  
DSS Website



Premier Packaging's innovative designs deliver functionality, marketability, sustainability, and anti-counterfeiting technology.





# CHAIRMAN'S TRACK RECORD

From just **5 out of 35** previously restructured companies:



Fai H Chan  
Chairman

Approx. Current Market Cap Over  
**USD 19.9 Bn**  
AND GROWING

[View Latest  
Financial  
Update](#)

Bringing in Profits of over  
**USD 1 Bn**  
PER ANNUM

2020/2021 Financial Update  
of 5 companies  
**USD 18.1 Bn**

2020/2021 Revenue  
approximately  
**USD 10.3 Bn**

2020/2021 Profits  
approximately  
**USD 1.4 Bn**

**ZH International Limited**  
Formerly Known as Heng Fai Enterprises



Hong Kong Stock Exchange Listed  
Restructured from the verge of Bankruptcy

**Global Medical REIT**



New York Stock Exchange Listed  
Founded and Funded from Ground Zero

**SingHaly! Ltd**  
Formerly Known as SingXpress Land



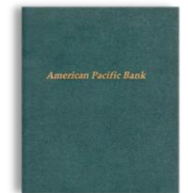
Singapore Exchange Listed  
Restructured from the verge of Bankruptcy

**China Gas Holdings Ltd**



Hong Kong Stock Exchange Listed  
Restructured from the verge of Bankruptcy

**American Pacific Bank**



NASDAQ Listed  
Recapitalized from the verge of Bankruptcy



[www.fai185.com](http://www.fai185.com)

[www.chanhengfai.com](http://www.chanhengfai.com)

[Watch Video](#)

[观看视频](#)





**CHAN HENG FAI**  
CHAIRMAN



**MOE CHAN**  
DIRECTOR



**DANNY LIM**  
DIRECTOR



**WONG TAT KEUNG**  
DIRECTOR



**WONG SHUI YEUNG**  
DIRECTOR



**WILLIAM WU**  
DIRECTOR



**JOANNE WONG**  
DIRECTOR



# MANAGEMENT & ADVISORS



**Charley Mackenzie**



**Frank D Heuszel**



**Vincent Lum**



**Antony Chan**



**Michael Gershon**



**Ronald Wei**



**John Thatch**



**Sharmar O'Bryant**



**Aileen Ang**



**Alan Lui**



**Andrew Stuber**



**Melissa K. Sims**



**Benny Lee**



**Kenneth Tan**



**Jason Grady**



**Todd D. Macko**



**Alex Liu**



**Nathan Lee**



**Shirley Lau**



**Liaw Wei Sheng**



**Adam Tan**



**Pearlyn Kee**



---

**ALSET<sup>®</sup> INC.**

---

**THANK YOU!**

Visit Us at:  
[www.alsetinc.com](http://www.alsetinc.com)

For enquiries, please contact:  
[contact@alsetinc.com](mailto:contact@alsetinc.com)